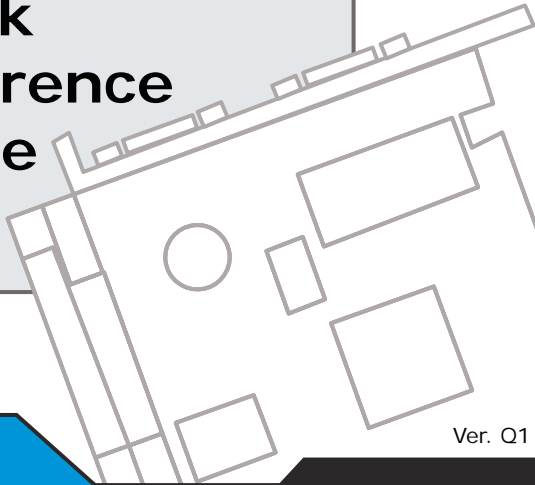


BC-0230

Quick Reference Guide



Ver. Q1

All Rights Reserved. Copyright 2014

Packing Checklist

If you discover any item below damaged or lost, please contact your vendor.

- BC-0230 x 1
- This Quick Reference Guide x 1
- Manual/Driver CD x 1
- Jumper (2.0 mm) x 5
- SATA Cable (460 mm) x 1
- I/O Shield x 1

Jumper Setting

CAUTION! Danger of explosion if the battery is replaced wrong. Replace only with the same or equivalent type recommended by the manufacturer. Dispose of used batteries according to the manufacturer's instructions.

BIOS Disable Selection

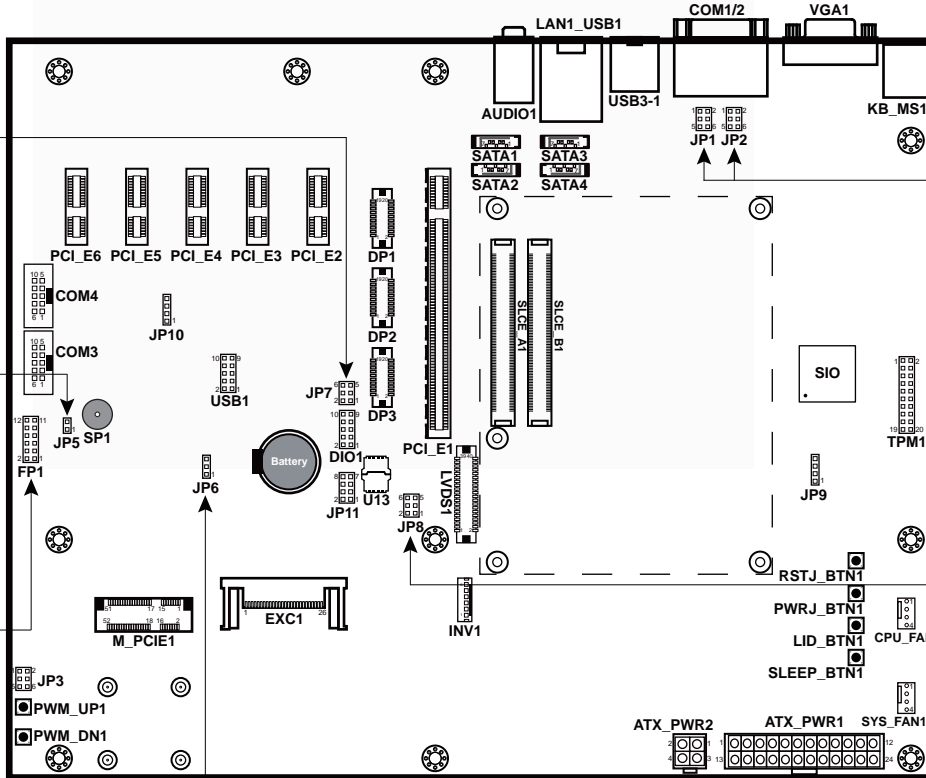
- SPI1: Module
SPI2: Carrier
- SPI1: Carrier
SPI2: Module
- SPI1: Module
SPI2: Module (default)

Hardware Power Fail Selection

- Disable (default)
- Enable

Front Panel Selection

- HDD LED
- Power LED
- Reset Button
- Power Button
- External Speaker



COM1/COM2 RI & Voltage Selection

- RI (default)
- 12V
- 5V

LVDS Voltage Selection

- 3.3V (default)
- 5V

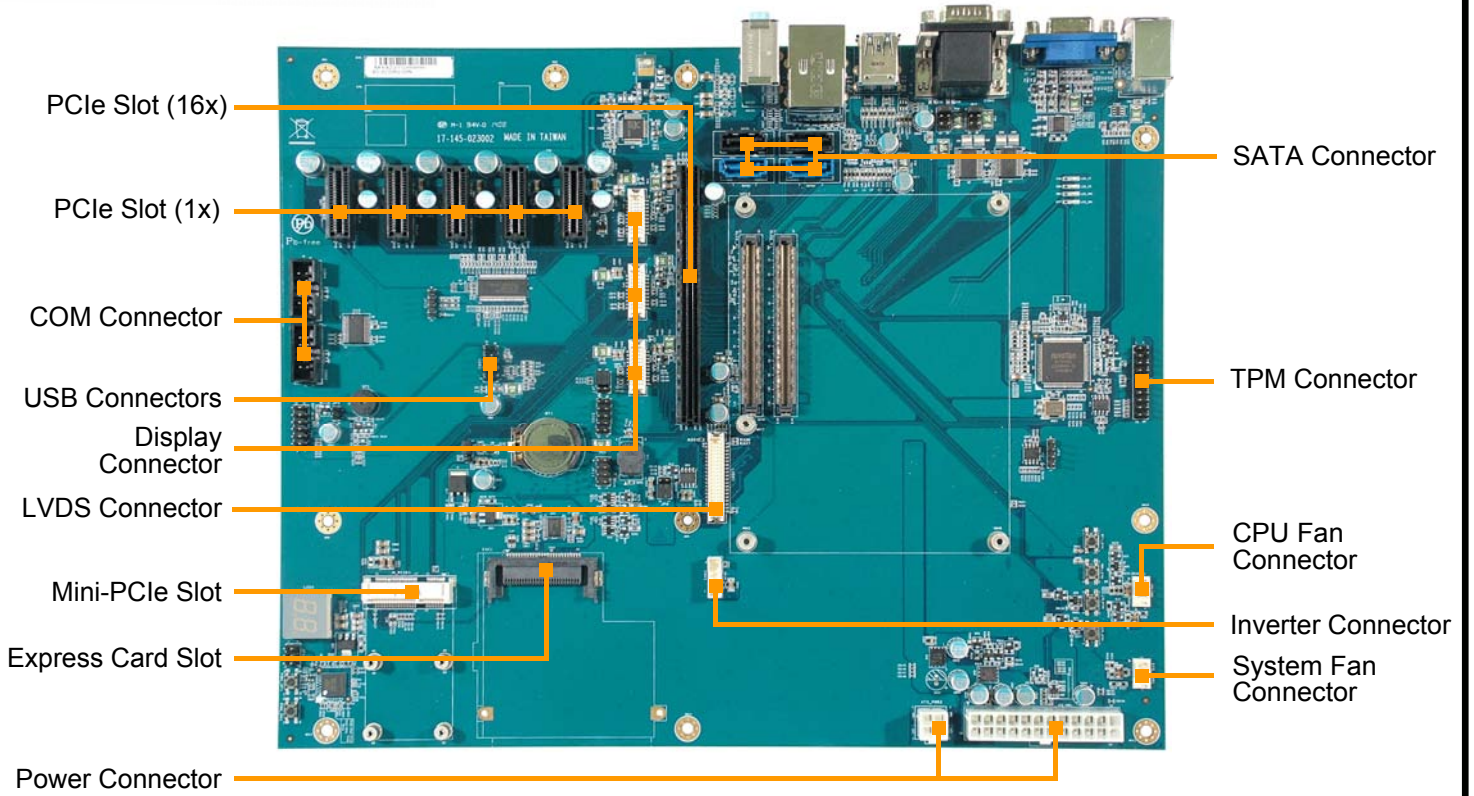
Clear CMOS Data Selection

- Clear CMOS
- Normal (default)

BC-0230

COM Express Type 6 ATX Carrier Board

Front View



I/O View

