

MH-5102

Quick Reference Guide



Ver. Q1

All Rights Reserved. Copyright 2019

Packing Checklist

If you discover any item below are damaged or lost, please contact your vendor immediately.

- MH-5102 Integrated Pad x1
- This Quick Reference Guide x1
- AC Power Adaptor x1
- Hand Strap (Optional) x1
- Neck Strap (Optional) x1

MH-5102 Driver Utilities and User Manual file have been stored in the Integrated Pad system:

File Path: C:\MH-5102_v1.0

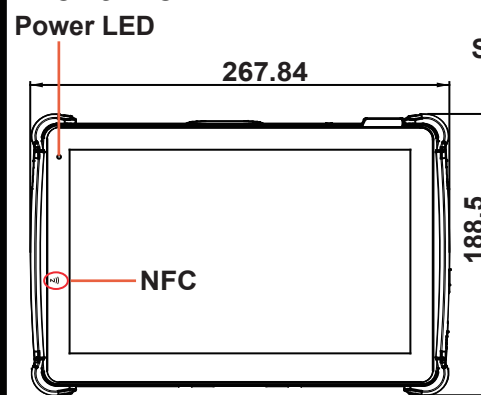
Specifications

System	
CPU Type	Intel Atom® x5-Z8550 Processor
Memory Support	1 x 2GB LPDDR3 / 2x 2GB LPDDR3
O.S.	WIN10 IoT Enterprise LTSP 2016 OS (64 bits) / WIN10 professional (64-bits)
Audio	1 x 1W Speaker, 1 x Audio Jack (headset microphone)
Battery Pack	Main battery (7900mAh) & RTC battery
Wi-Fi + Bluetooth module	802.11 ac/a/b/g/n 2T2R wireless LAN and Bluetooth 4.1 M.2 module
G-Sensor	Accelerator sensor
Ambient Light Sensor	Yes
IP Rating	IP54 (front panel only)
Dimensions & Weight	259.9 x 175.9 x 17.7mm (WxHxD) / 770g (without any optional devices attached)
Power Supply	DC 12V/2A/24W or 24V/1A/24W
Certification	CE/FCC/TELEC
Display	
LCD Panel	10.1" IPS display with 1920 x 1200 FHD resolution (Brightness: 500 cd/m ²)
Touch Panel	Multi-touch projected capacitive / OCA direct bonding of touch + panel for Sunlight readability and with Anti-Fingerprint coating
Integrated Devices (Optional)	
Barcode Scanner	Honeywell 2D Barcode scanner
4G/GPS Module	4G+GNSS mPCIe full-sized card (band: B1/B3/B5/B7/B8/B20)
NFC Module	NXP NPC300 main chip module
Front & Rear Camera	USB 5M pixels camera module with autofocus function
MSR Module	Meet ISO 7811, support AAMVA / JIS II format, support single / dual / triple tracks
Smart Card Reader Module	USB port co-layout with 3G (Meet ISO 7816 & EMV Level 1 & 2 Certification)
Storage (SDIO Interface)	
Storage	1 x 32GB / 64GB eMMC
External I/O Ports	
DC-IN Jack	1 x DC-IN Jack
Cradle Connector	1 x POGO pins (1x10 pins)
USB	Standard USB 3.0 (Type A) x1 for external expansion
SD (Secure Digital)	MicroSD Slot for internal memory expansion
SIM Card Slot	For 4G LTE network services
Audio Jack	Audio Jack x 1
Environment	
Operating Temp.	0°C~ 40°C (32°F ~ 104°F)
Storage Temp.	-20°C~ 60°C (-4°F~ 140°F)
Operating Humidity	0%~ 90% (no condensation)

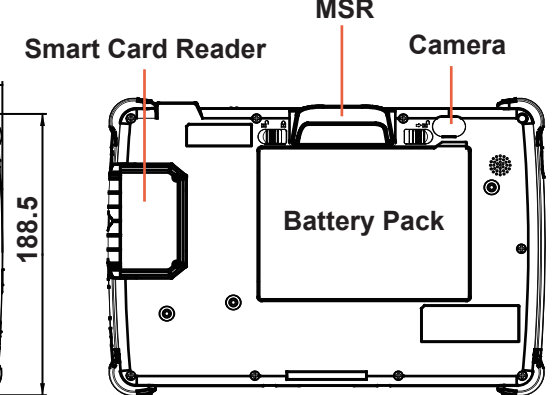
System View

Unit: mm

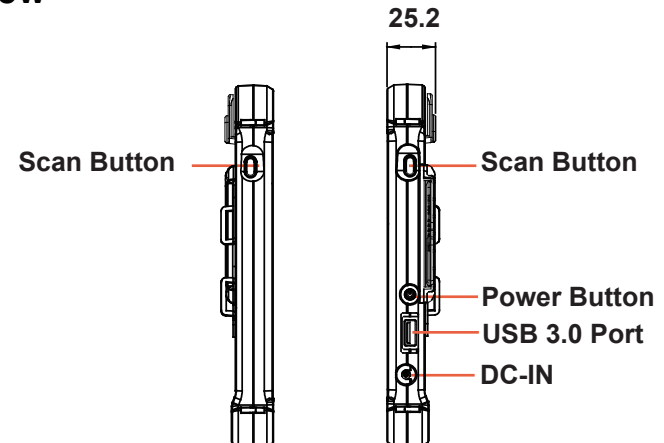
Front View



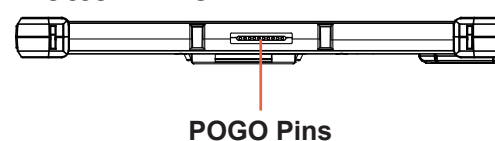
Rear View



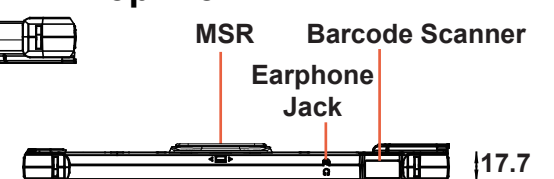
Side View



Bottom View



Top View

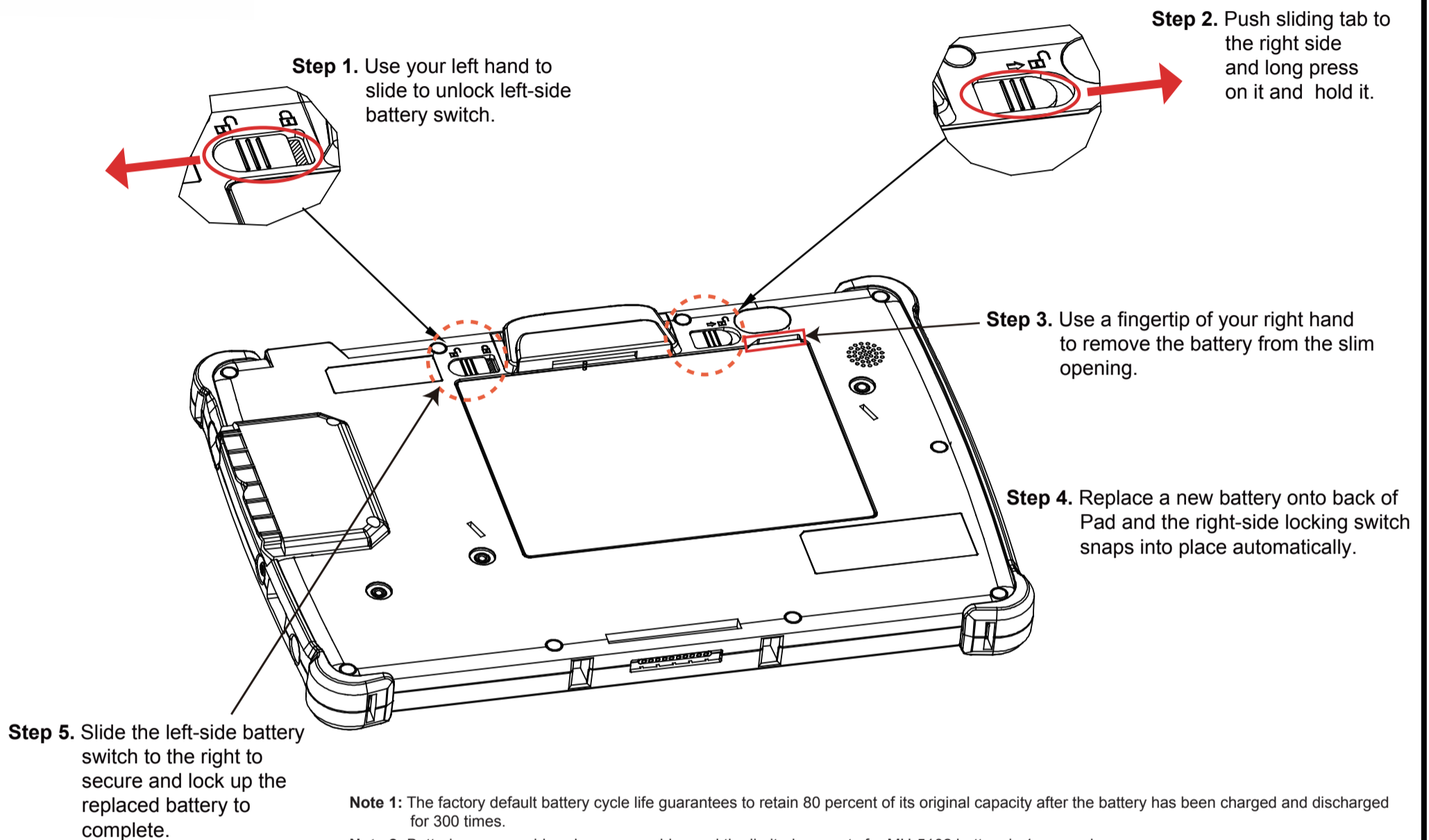


MH-5102

10.1" Integrated Pad Powered By Intel® Atom®

Quick Setup

Installing Battery



Safety Precaution

The following messages are reminders for safety on how to protect your system from damages and extend a long life of the system.

1. Check the Cable Voltage

- Make sure the range of operating voltage between AC 100V ~ 240V. Otherwise, the system could be damaged.

2. Environmental Conditions

- Place your MH-5102 on a sturdy, level surface. Be sure to allow enough space to have easy access around the system.
- Avoid extremely hot or cold place to install the system.
- Avoid exposure to sunlight for a long period of time or in an airtight space.
- Avoid the system from any heating device or using it outdoors in a cold winter day.
- Bear in mind that the operating ambient temperature is from 0°C ~ 40°C (32°F ~ 104°F).
- Avoid moving the system rapidly from a hot place to a cold place and vice versa because condensation may come from inside of the system.
- Don't place the system close to any radio active device in case of signal interference.

3. Handling

- Avoid putting heavy objects on top of the system.
- Don't allow foreign objects to fall into this product.
- If water or other liquid spills into this product, unplug the power cord immediately.

4. Good Care

- When the outside of the case is stained, remove the stain with a neutral washing agent with a dry cloth.
- Never use strong agents such as benzene and thinner to clean the system. If heavy stains are present, moisten a cloth with diluted neutral washing agent or with alcohol and then wipe thoroughly with a dry cloth.
- If dust has been accumulated on the outside, remove it by using a special made vacuum cleaner for computers.
- Don't contact the surface of capacitive touch before entering your operation system, or capacitive touch may have position problems for electrostatics interface.
- Don't exchange the M/B battery by yourself or serious damage may incur.

CAUTION! Danger of explosion if battery is incorrectly replaced. Replace only with the same or equivalent type recommended by the manufacturer. Dispose of used batteries according to the manufacturer's instructions.

WARNING! Some internal parts of the system may have high electrical voltage. And therefore we strongly recommend that qualified engineers can open and disassemble the system. The LCD and Touchscreen are easily breakable, please handle them with extra care.